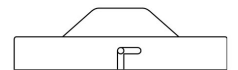
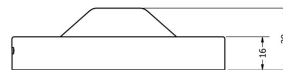
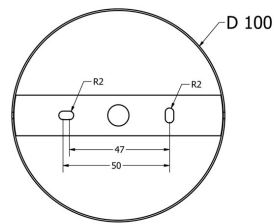


MATERIAL	Brass
HEIGHT	23cm   9.06"
WIDTH   DIAMETER	30.5cm   12.01"
LENGTH   PROJECTION	n/a
WEIGHT	0.8kg   1.76lb
LAMPHOLDER	E27
MAX WATTAGE	60W
VOLTAGE	220/240v
IP RATING	IP20
CLASS PROTECTION	1
SHADE	n/a
FLEX   BAR   CHAIN LENGT	100cm   40"
CABLE TYPE	MLCA007   3 Core Twist   Brown Braid   PVC

FIXING BRACKE MLROSE05 | Antique Brass



Product Notes:

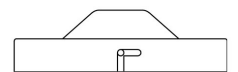
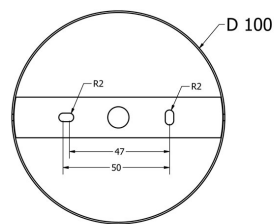
1) Lamps not included with light fixture. 2) All products are individually hand crafted, therefore may differ slightly within manufacturing tolerances. 3) Please refer to: <http://www.mullanlighting.com/terms> for full list of Terms & Conditions. 4) Cable/Chain can be shortened during installation. 5) Longer Cable/Chain available on request. 6) Additional colour finishes available on request. 7.) Dimensions do not include lamps.





MATERIAL	Brass
HEIGHT	23cm   9.06"
WIDTH   DIAMETER	30.5cm   12.01"
LENGTH   PROJECTION	n/a
WEIGHT	0.8kg   1.76lb
LAMPHOLDER	E27
MAX WATTAGE	60W
VOLTAGE	220/240v
IP RATING	IP20
CLASS PROTECTION	1
SHADE	n/a
FLEX   BAR   CHAIN LENGT	100cm   40"
CABLE TYPE	MLCA020   3 Core Twist   Black Braid   PVC

FIXING BRACKE MLROSE05 | Antique Silver



Product Notes:

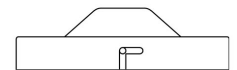
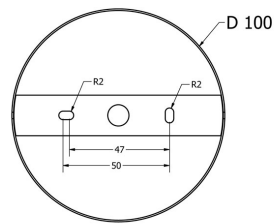
1) Lamps not included with light fixture. 2) All products are individually hand crafted, therefore may differ slightly within manufacturing tolerances. 3) Please refer to: <http://www.mullanlighting.com/terms> for full list of Terms & Conditions. 4) Cable/Chain can be shortened during installation. 5) Longer Cable/Chain available on request. 6) Additional colour finishes available on request. 7.) Dimensions do not include lamps.





MATERIAL	Brass
HEIGHT	23cm   9.06"
WIDTH   DIAMETER	30.5cm   12.01"
LENGTH   PROJECTION	n/a
WEIGHT	0.8kg   1.76lb
LAMPHOLDER	E27
MAX WATTAGE	60W
VOLTAGE	220/240v
IP RATING	IP20
CLASS PROTECTION	1
SHADE	n/a
FLEX   BAR   CHAIN LENGT	100cm   40"
CABLE TYPE	MLCA020   3 Core Twist   Black Braid   PVC

FIXING BRACKE MLROSE05 | Polished Brass



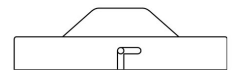
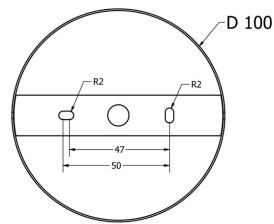
Product Notes:

1) Lamps not included with light fixture. 2) All products are individually hand crafted, therefore may differ slightly within manufacturing tolerances. 3) Please refer to: <http://www.mullanlighting.com/terms> for full list of Terms & Conditions. 4) Cable/Chain can be shortened during installation. 5) Longer Cable/Chain available on request. 6) Additional colour finishes available on request. 7.) Dimensions do not include lamps.



MATERIAL	Brass
HEIGHT	23cm   9.06"
WIDTH   DIAMETER	30.5cm   12.01"
LENGTH   PROJECTION	n/a
WEIGHT	0.8kg   1.76lb
LAMPHOLDER	E27
MAX WATTAGE	60W
VOLTAGE	220/240v
IP RATING	IP20
CLASS PROTECTION	1
SHADE	n/a
FLEX   BAR   CHAIN LENGT	100cm   40"
CABLE TYPE	MLCA007   3 Core Twist   Brown Braid   PVC

FIXING BRACKE MLROSE05 | Satin Brass



Product Notes:

1) Lamps not included with light fixture. 2) All products are individually hand crafted, therefore may differ slightly within manufacturing tolerances. 3) Please refer to: <http://www.mullanlighting.com/terms> for full list of Terms & Conditions. 4) Cable/Chain can be shortened during installation. 5) Longer Cable/Chain available on request. 6) Additional colour finishes available on request. 7.) Dimensions do not include lamps.

